

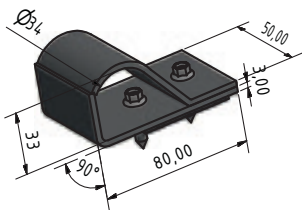
Snow retention system trapezoidal roof

Kling snow retention systems are an economical and safe fastening of snow retention tubes on trapezoidal sheets, roll cap roofs and sandwich elements. The individual snow chains are fastened using special brackets and self-drilling stainless steel screws.

With the aid of the Kling snow retention systems, slipping of the snow quantities is prevented by means of snow retention rows, which are fixed on the standing seam.

- On request, the snow retention systems can be powder coated in a RAL colour of your choice. ▪

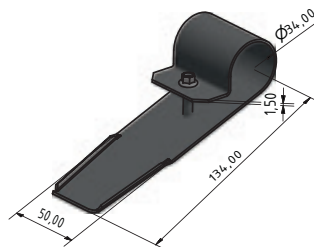
Snow retention fixing



For trapezoidal roof profiles ▪ suitable for tubes with 32 mm Ø ▪ material: clamp aluminium, screws stainless steel V2A 1.4301 ▪ PU 50 pieces

Material	Article-No.
Aluminium	P T10010

Ice holder



Ice holder with self-tapping V2A screws for mounting on the snow retention tube ■ PU 50 pcs

Material	Article-No.
Aluminium	P T50010

Snow retention tube



32/2 mm ■ for attachment to the snow retention clamp

Material		Article-No.
Aluminium	rm	P Z30020
Copper	rm	P Z40020
Stainless Steel	rm	P Z50020

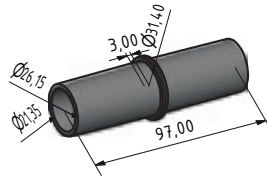
Snow retention tube end cap



for snow retention tube 32/2 mm ▪
PU 10 pcs

Material	Article-No.
PVC black	P Z20020

Tube jointer



Tube jointer ▪ for a safe expansion of
snow retention tubes ▪ PU 20 pcs

Material	Article-No.
black Ø 25 mm	P Z10010
grey Ø 27 mm	P Z20010

Application

The number and arrangement of the snow retention systems depends on the roof inclination, the length of the panels and the expected snow load (snow load zone) (DIN 1055-5).

Note: In all cases the technical regulations (of the respective countries), legal regulations (of the respective countries), statics and local conditions must be observed!

Quality

All long sliding clips are industrially produced with stamping and bending machines. Internal quality controls ensure a consistently high quality of fastening elements.

Extraction values

The extraction values of the snow retention clamp are dependent on a correct assembly and the observation of the required tightening torques of the screws of 55 Nm. For the Kling Dach snow retention clamp deduction values of 1200 N (120 kg) can be assumed for the calculation.

Assembly

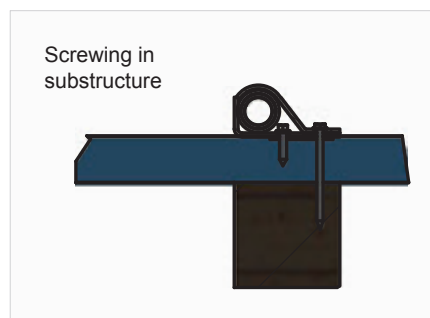
Careful assembly of the individual snow retention clamp is indispensable. The thickness of the sheets should be at least 0,7 mm. Under that the holdings must be riveted.

Important notes: It is advisable to mount a holding on every upper part (max. distance 60 cm).

Under no circumstances screws must not be overtorqued.

The standard mounting is described in the mounting instructions video at www.klingdach.de.

When screwing into the substructure the right choice of the screws (possibly one-site fasteners) and the correct screwing into the roof (see picture) must be noticed.



Roof substructure

The roof skin and the snow retention system can only withstand the stresses the roof substructure can withstand. Before applying the fastening, the structure of the subconstruction must be checked for the required quality and strength.

The required nominal thickness of the formwork for roofing is at least 24 mm (22 mm for wood-based panels) at the time of installation. The thrust force of the snow load must be taken into account when arranging the fixed clips.

Arrangement

The arrangement of the required number of snow retention clamps in order to safely hold the thrust force of the snow load must be calculated expertly according to the regulations of the ZVSHK.